

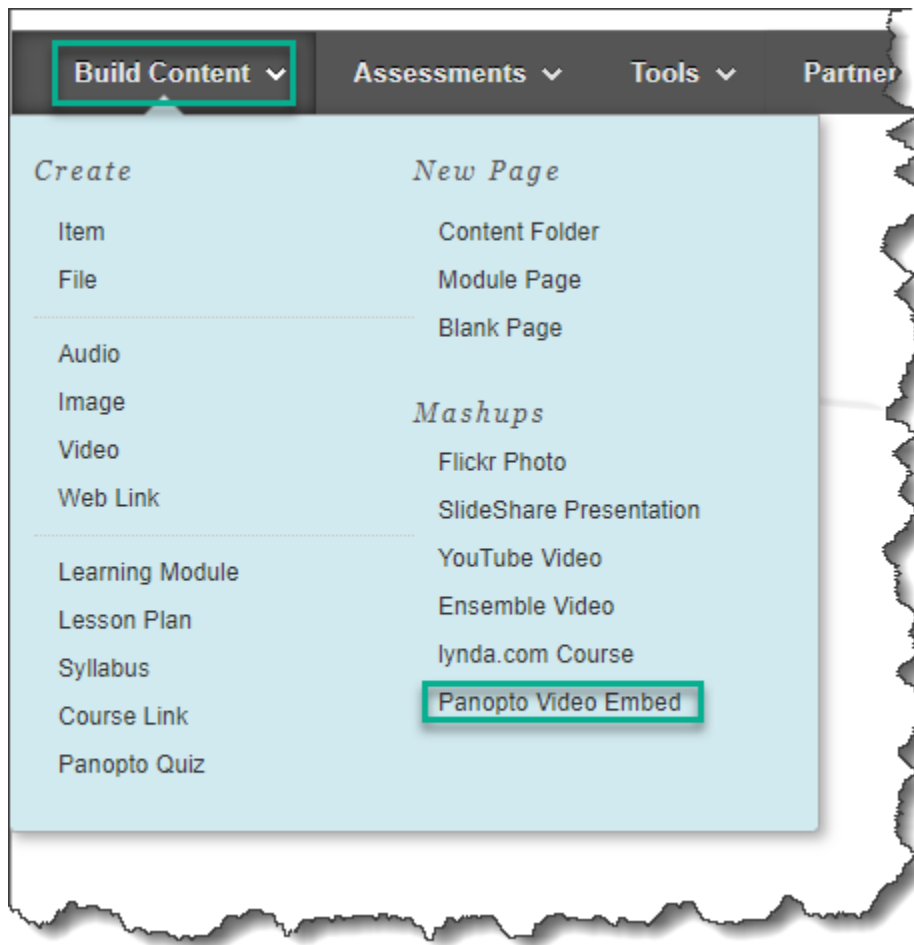
Embedding a Panopto Video in Blackboard

You can easily embed your Panopto video within Blackboard. Embedding is a good way to share a video with your students. When you embed a video, your student can play the video directly within Blackboard, without having to click on additional links.

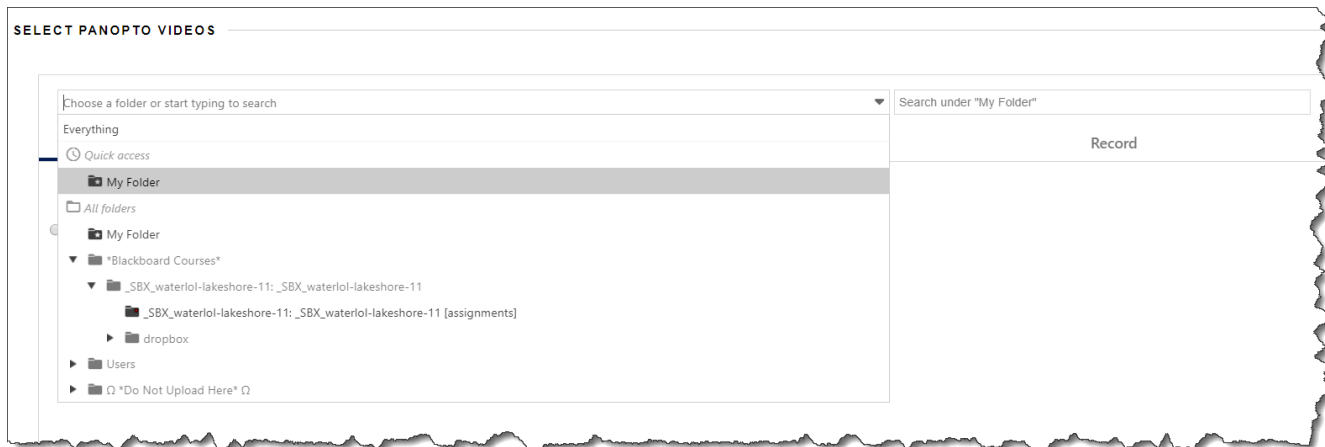
Embed a video or playlist: Option A

Go to the relevant section of your Blackboard course.

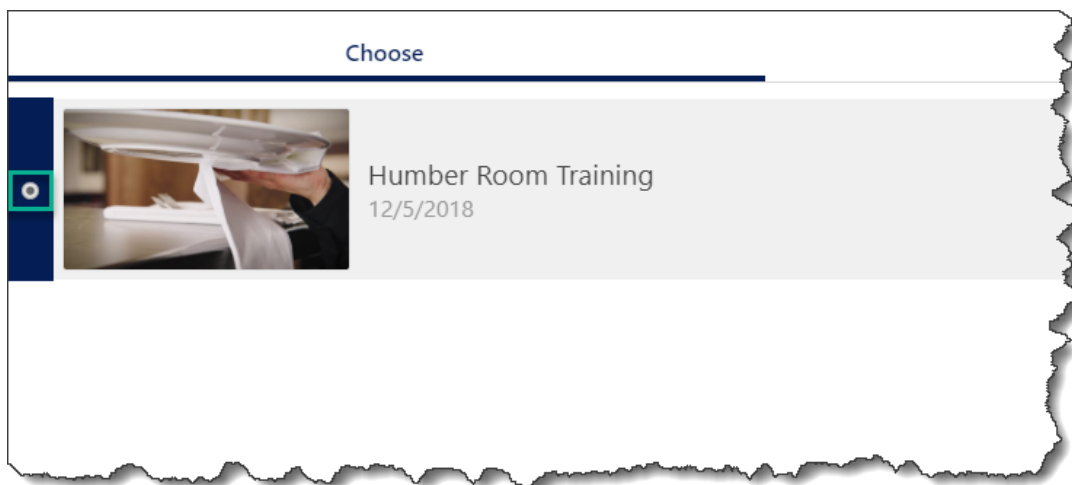
1. Click on **Build Content**. From the drop-down menu, under the Mashups section, click on **Panopto Video Embed**.



- From the drop-down menu, navigate to the folder that contains the video you want to share with your students. You can also search for videos within folders or click “Everything” to list everything you have access to use.



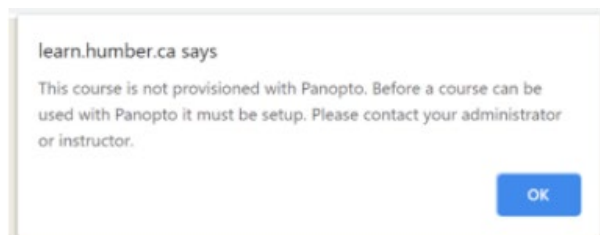
- Select the video via the radio button on the left.



- Click **Insert Video**.

Congratulations! Your Panopto video is now embedded into Blackboard.

Troubleshooting. A small number of faculty may see the following error stating that “this course is not provisioned with Panopto” when clicking “Panopto Video Embed”. If you receive this error, you must first [provision your course](#).

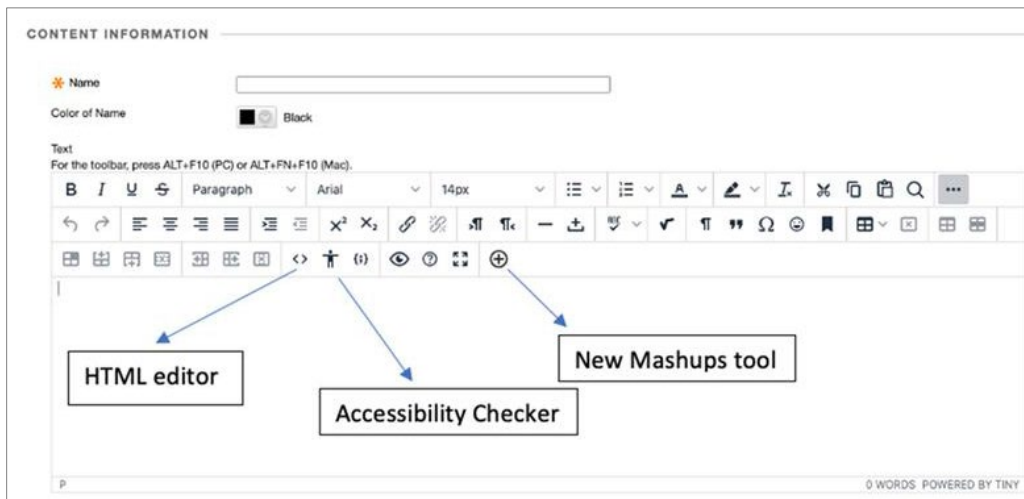


Embed a video or playlist: Option B

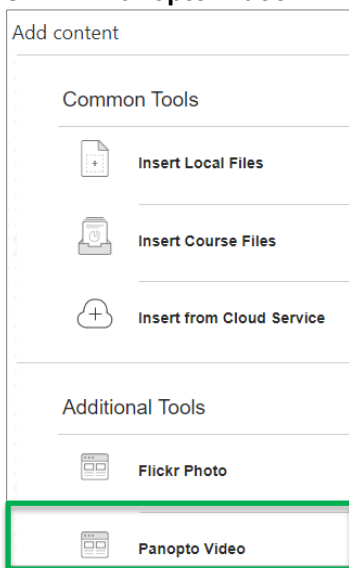
Alternatively, you can embed a video or playlist using Blackboard's text editor. You may wish to do this if you have an existing post/item that you'd like to add a video to, or if you'd like to surround your video with additional text or context.

To access the mashup tool by creating a new item:

1. Click on **Build Content**. From the drop-down menu, under the Create section, click on **Item**.
2. To embed a Panopto video into a new or existing item, click on the new Mashups tool (+ sign) on the bottom row of the editor.



3. Choose **Panopto Video** from the list of Additional Tools.



4. You can then navigate, select and insert the relevant video as described in Option A above.